

Centerfield's **insure/RESOURCES** module gives IT control over the use of query tools and allows them to define straightforward rules that are automatically enforced to govern the use of system resources by tool, by user and by time of day. This lets administrators manage their IBM System i from a global perspective and ensure mission-critical applications receive priority-isolated from potential delays or downtime caused by runaway queries.

Users can also define policies with **insure/RESOURCES** to effectively manage IBM's SMP feature. These rules provide protection against resource overruns yet allow applications to get the most value from their investment in parallel database processing. **insure/RESOURCES** helps balance resources from a business perspective and supports application performance and control by providing protection with the following attributes

key benefits

- **Proactive versus reactive management** - Adjustments are made proactively not reactively. This prevents problems rather than trying to recover after a disaster has already happened.
- **Database focused** - Because **insure/RESOURCES** is focused on database access, it provides protection in the area with the greatest risk to application availability and performance.
- **Flexible rules** - Rules can be defined for individual users, by time of day, and for individual interface. This allows IT to manage their risk with appropriate coverage and not spread impact to all users or applications.
- **Rules tied to request** - Rules can be written and enforced by individual request (rules are not 'hardcoded' to a particular tool).
- **Low risk** - All rules can run in "what if" simulation mode. In other words, rules can be defined and **insure/RESOURCES** will report on the ramification of the rule before it is ever actually implemented.
- **SMP management** - SMP rules can be defined to take advantage of parallel database queries but not be subject to their potential downside.
- **Unique tracking** - No other product has the capability to record the actual queries that run on the IBM System i. IT shops often do not know what end-users are doing in terms of data access, but **insure/RESOURCES** provides capabilities to determine who runs queries, what data is being access, when queries are run, and what actual requests look like.
- **Added flexibility for chargeback** - Rules can be defined so individuals or groups can have different accounting codes based on the use of regular and query-based applications. This allows users to segment and track the use of system resources more granularly and potentially institute different charge-back schemes based on this capability.

key features

Easy to use interface for managing policies

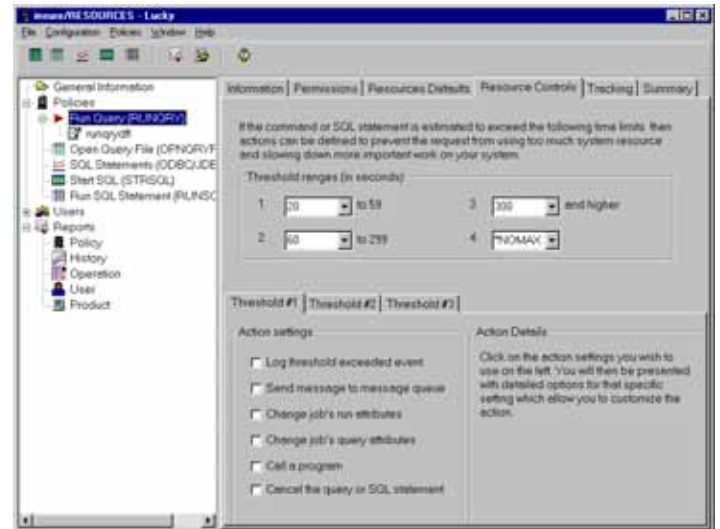
- Powerful management reports for planning, implementation, and ongoing administration.
- Built-in policies for most common cases optimized for both one-way and multi-processor systems.
- Complete control over job priority, IO parallelism, CPU parallelism, time slice and other work management settings.
- Customize and extend policies with user-defined programs and commands.
- Thresholds to set up different policies based on the estimated impact the query will have on the system.
- User-defined day allows set-up on the way your business operates.

Light-weight server to enforce policies

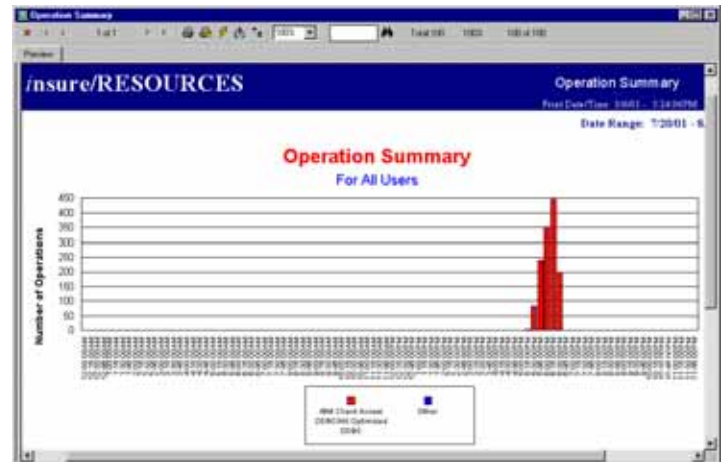
- Low impact on query activity
- Only active for products that have a policy defined.
- No additional impact to for other applications (order entry app, etc)
- Integrated tightly with OS/400 - i5/OS. Built upon work management and system APIs to ensure tight integration.

Quick to deploy, easy to manage

- Quickly setup policies using built-in templates
- No-risk mode allows you to configure policies and see what will happen before enforcing the policies
- Once defined, use the at-a-glance management reports to monitor your policies.
- Designed to be easily incorporated into your management process. (Works out-of-the-box with existing management tools, let's you define your management workday, ready-to-go reports for your use and for management use to track business and system management policies.)



Policy-based resource management



insure/RESOURCES balances the scale



insure/RESOURCES is part of *HomeRun* All you'll ever need to tune SQL for DB2 on IBM System i

insure/SQL, insure/RESOURCES and HomeRun are registered trademarks of Centerfield Technology, Inc. All other products mentioned are either registered trademarks or trademarks of their respective companies. Technical specifications are subject to change without notice. Please contact Centerfield Technology for latest information. Copyright 2010 Centerfield Technology, Inc. All rights reserved.

3131 Superior Drive NW - Ste C
Rochester, Minnesota 55901 USA
ph 888.387.8119 / 507.287.8119

<http://www.centerfieldtechnology.com>